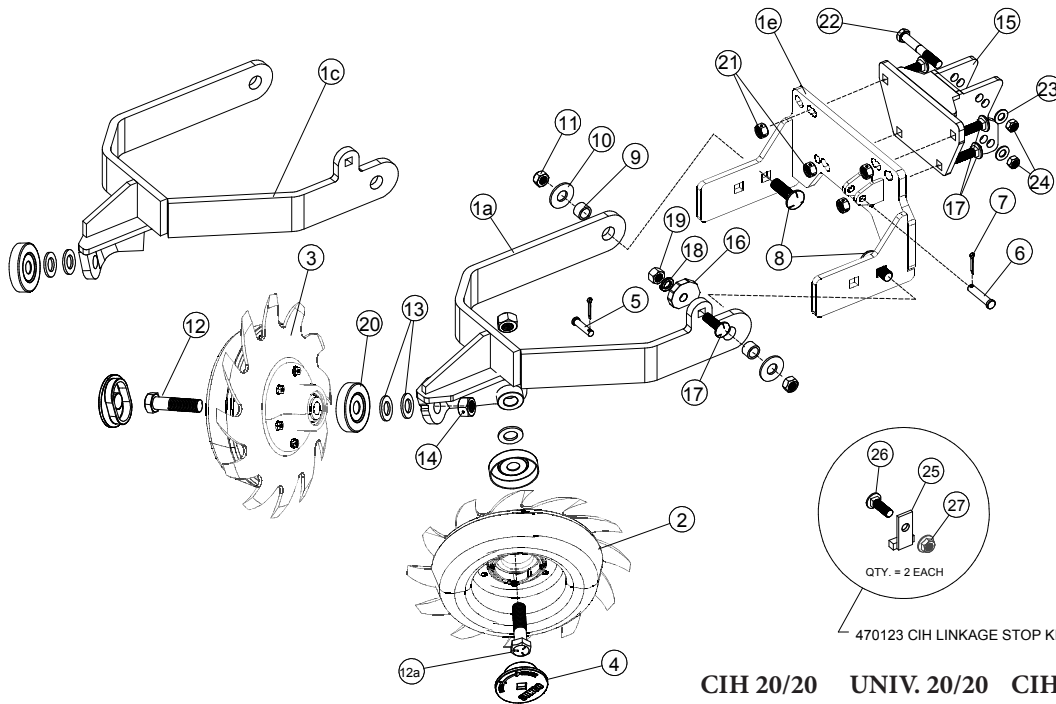


**5011277L/R & 5011278L/R & 5011285L/R & 5011286L/R
KIT III - FLOATING SABER TOOTH**



ITEM	PART #	DESCRIPTION	CIH 20/20	UNIV. 20/20	CIH 1 DISC	UNIV. 1 DISC
			5011277L/R	5011278L/R	5011285L/R	5011286L/R
			QTY	QTY	QTY	QTY
1a	471028AR	Arm II - Floating S/T - 20/20 RH	1	1	0	0
1b	471028AL	Arm II - Floating S/T - 20/20 LH (not shown)	1	1	0	0
1c	471027R	Arm II - Floating S/T - N/M RH 1 disc	0	0	1	1
1d	471027L	Arm II - Floating S/T - N/M LH 1 disc (not shown)	0	0	1	1
1e	471049R	Mount S/T - C/F - Univ. RH	1	1	1	1
1f	471049L	Mount S/T - C/F - Univ. LH (not shown)	1	1	1	1
2	3012618L	Disc-Hub-Brg-Depth Band Assy LH	1	1	1	1
3	3012618R	Disc-Hub-Brg-Depth Band Assy RH	1	1	1	1
4	370132	Cap Depth Band	2	2	1	1
5	203747	Pin Clevis 3/8 x 1 1/4 Pltd	1	1	1	1
6	203760	Pin Clevis 7/16 x 2 Pltd	1	1	1	1
7	203480	Pin Cotter 9/64 x 1	2	2	2	2
8	200456	Carriage Bolt 5/8-11 x 2 Gr. 5	2	2	2	2
9	380110	Bushing .875 x .650 x .563	2	2	2	2
10	202218	Washer 5/8 Flat	2	2	2	2
11	201142	Nut 5/8-11 Top Lock	2	2	2	2
12	200406	HHCS 3/4-10 x 3 1/2 Gr. 5	1	1	1	1
12a	200407	HHCS 3/4-10 x 4 Gr. 5	1	1	0	0
13	202220	Washer 3/4 Flat SAE	3	3	2	2
14	201152	Nut 3/4-10 Hex Center Lock	2	2	1	1
15	471051	Mount Adapter CIH to Univ.	1	0	1	0
16	360064	Cam - 9 lobe	1	1	1	1
17	200321	Carriage Bolt 1/2-13 x 1 1/2 Gr. 5	5	1	5	1
18	202116	Washer 1/2 Split Lock	1	1	1	1
19	201116	Nut Hex 1/2-13	1	1	1	1
20	360062	Bearing Shield 2.91 x .76	2	2	1	1
21	201117	Nut 1/2-13 Center Lock	4	0	4	0
22	200346	HHCS 1/2-20 x 3 1/2 Gr. 8	2	0	2	0
23	202217	Washer 1/2 SAE Hardened	2	0	2	0
24	201130	Nut 1/2-20 Top Lock	2	0	2	0
25	470101H	Linkage Stop 7/16	2	0	2	0
26	200332	Carriage Bolt 1/2-13 x 1 1/4 Gr. 5	2	0	2	0
27	201119	Nut 1/2-13 Hex Flange	2	4	2	4
	200334	HHCS 1/2-13 x 1 1/2 (Univ. Mnt. - not shown)	0	4	0	4
	470410	Kit Adapter - CIH to Univ. (Items 15, 21-27)	1	0	1	0