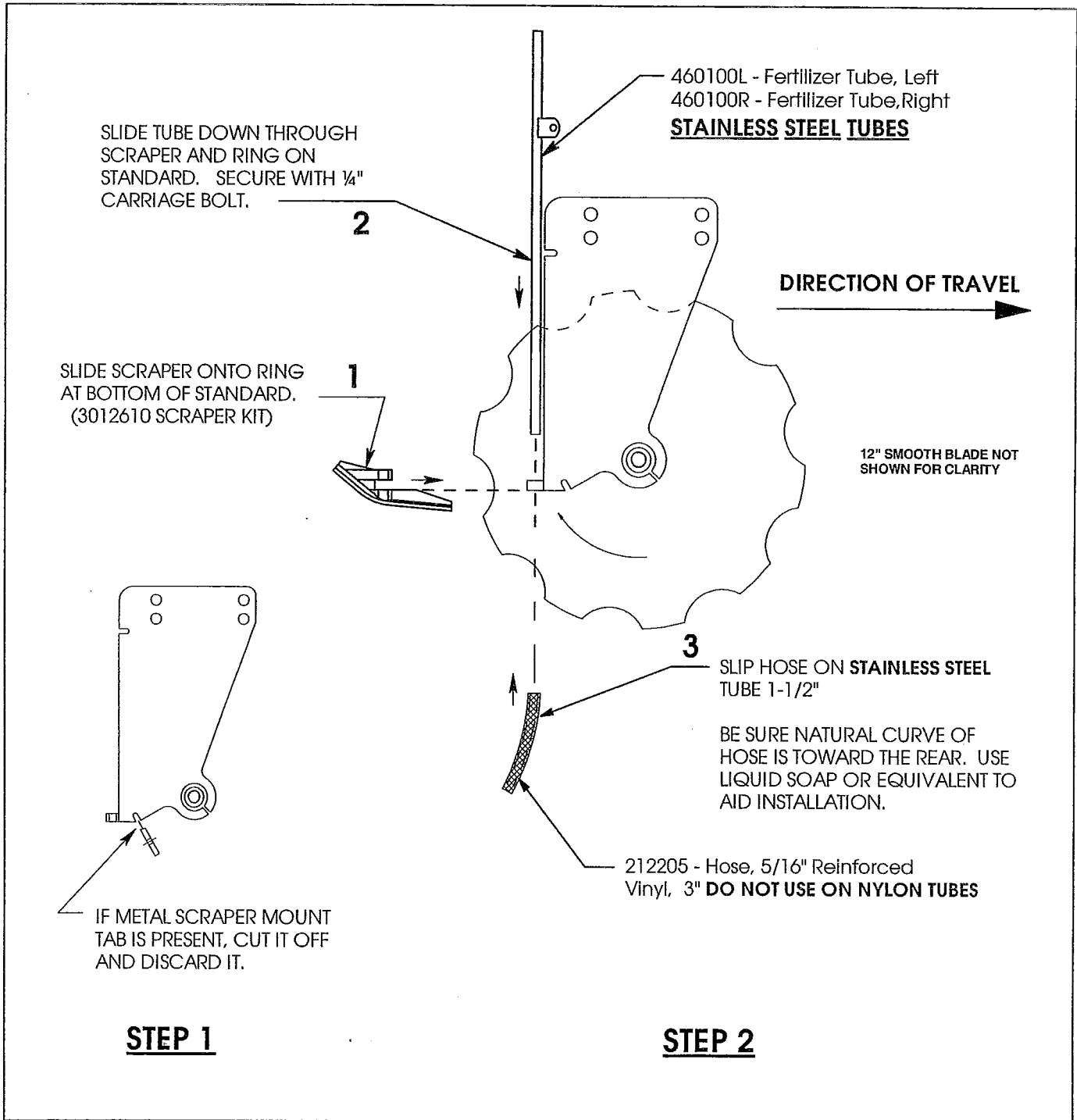


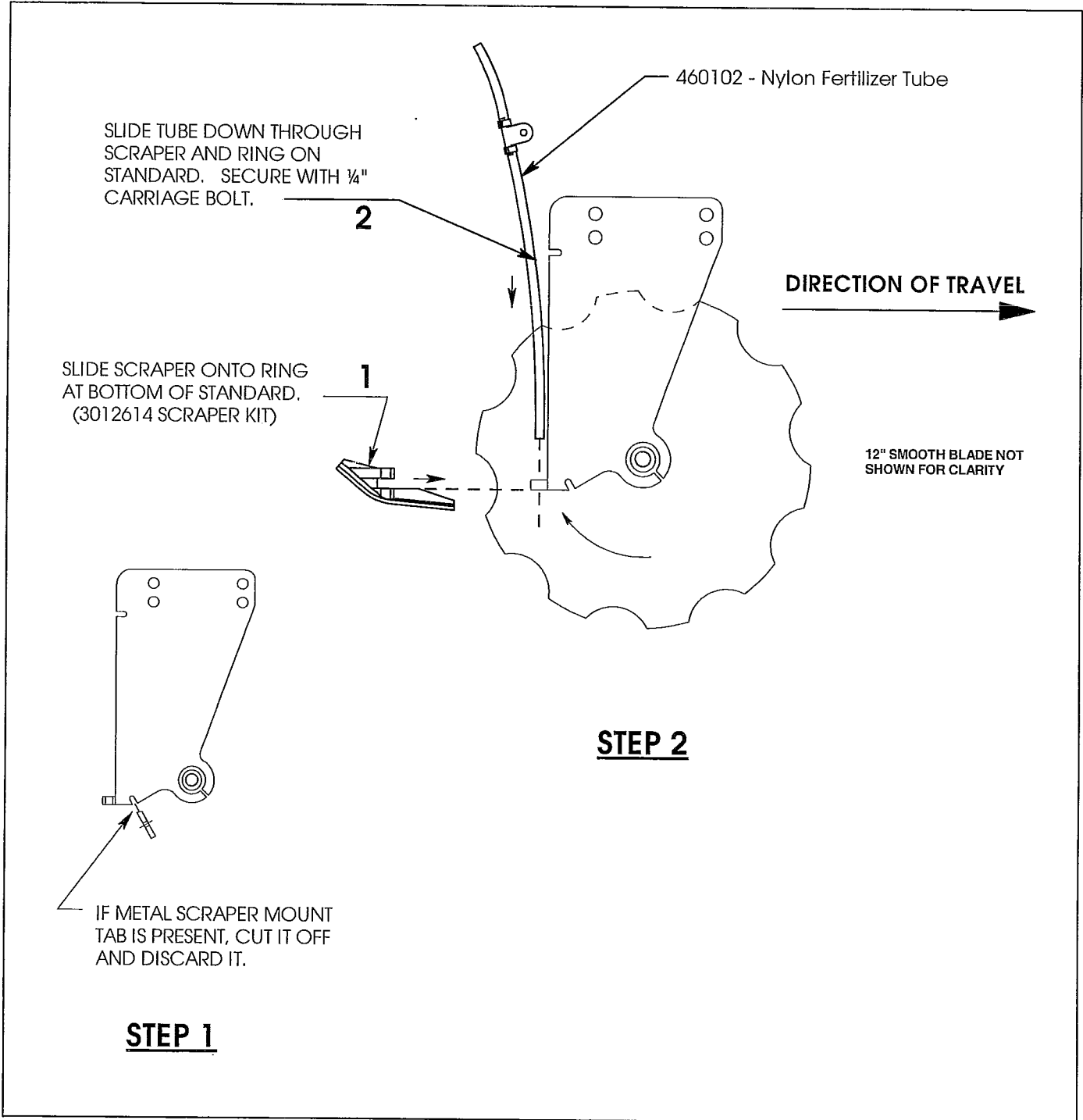
NUTRI-MATE I & II

SCRAPER AND DROP TUBE ASSEMBLY

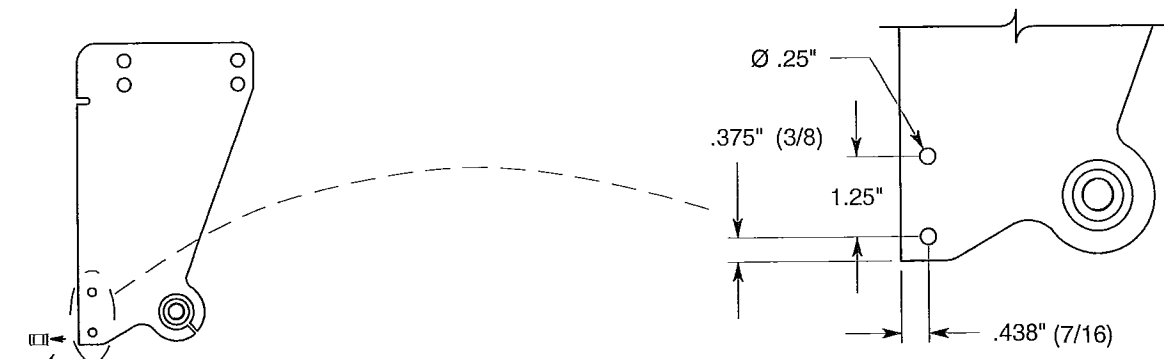


NUTRI-MATE I & II

SCRAPER AND NYLON DROP TUBE ASSEMBLY



METAL FABRICATED SCRAPER AND NYLON DROP TUBE ASSEMBLY INSTRUCTIONS



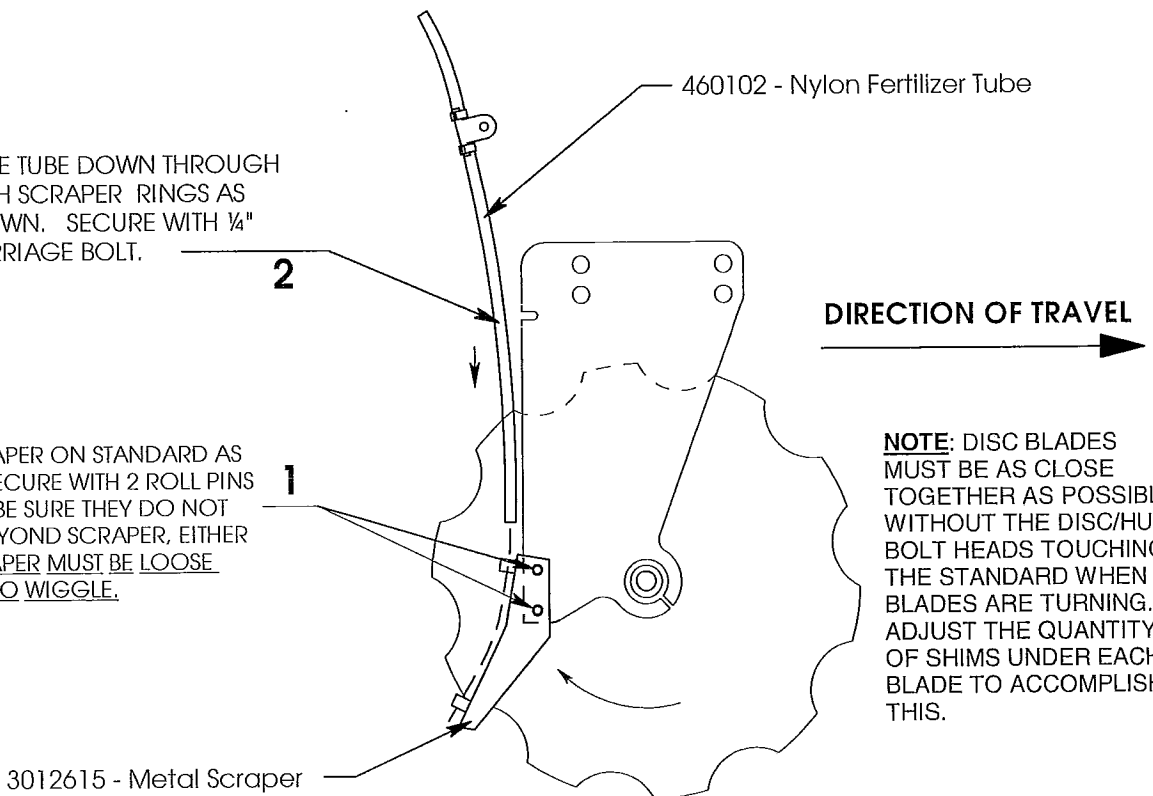
IF DROP TUBE HOLDER RING IS PRESENT, CUT IT OFF, DISCARD & GRIND SMOOTH.

IF STANDARD DOES NOT HAVE THESE HOLES, DRILL TWO $0.25'' (1/4'')$ HOLES AT THESE PRECISE LOCATIONS. (Use of a carbide bit at slow speed and Elmers Glue will make drilling easier.)

STEP 1 Prepare Standard

SLIDE TUBE DOWN THROUGH BOTH SCRAPER RINGS AS SHOWN. SECURE WITH $1/4''$ CARRIAGE BOLT.

SLIDE SCRAPER ON STANDARD AS SHOWN. SECURE WITH 2 ROLL PINS ($1/4 \times 3/4$). BE SURE THEY DO NOT EXTEND BEYOND SCRAPER, EITHER SIDE. SCRAPER MUST BE LOOSE ENOUGH TO WIGGLE.



NOTE: DISC BLADES MUST BE AS CLOSE TOGETHER AS POSSIBLE WITHOUT THE DISC/HUB BOLT HEADS TOUCHING THE STANDARD WHEN BLADES ARE TURNING. ADJUST THE QUANTITY OF SHIMS UNDER EACH BLADE TO ACCOMPLISH THIS.

3012615 - Metal Scraper

12" SMOOTH BLADE NOT SHOWN FOR CLARITY

STEP 2 Install Scraper & Tube