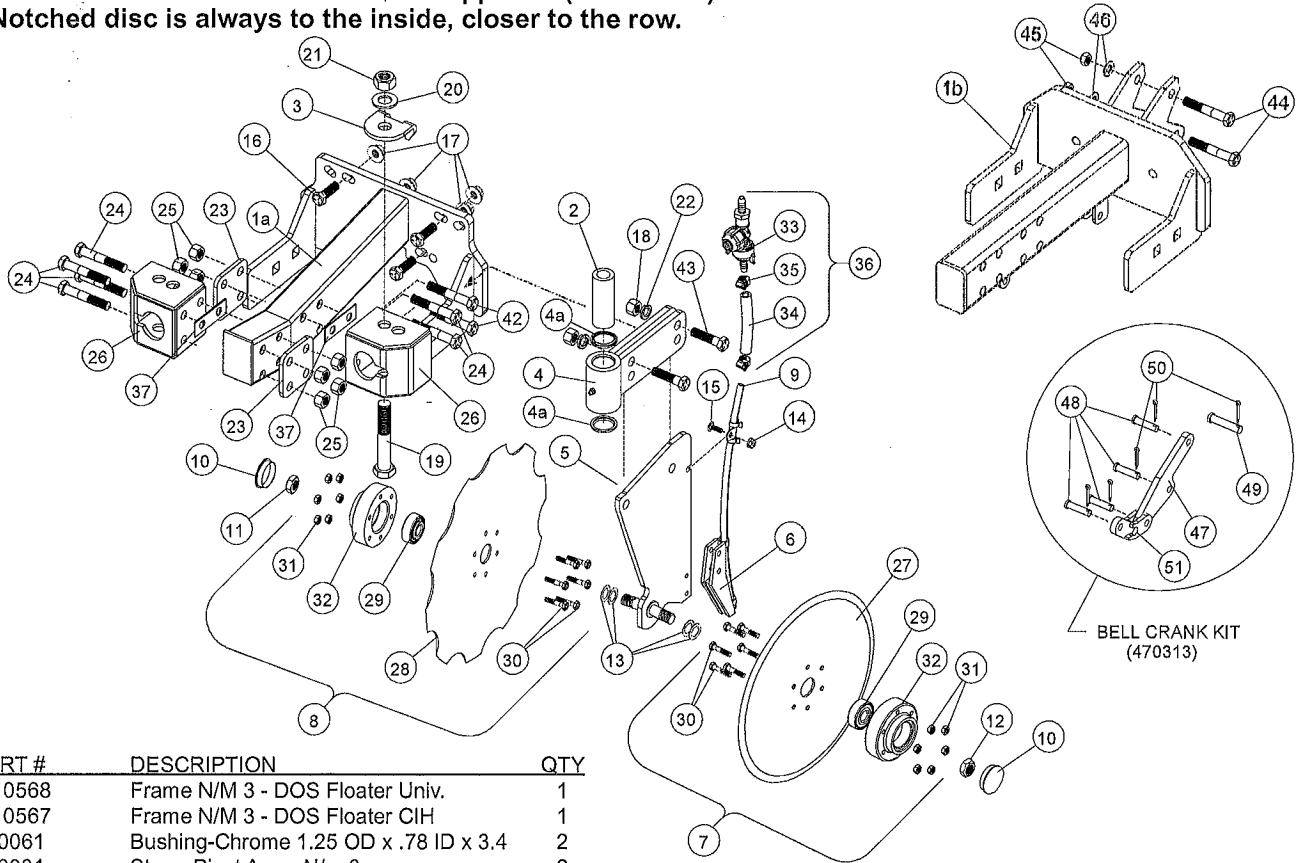


# DOUBLE OFFSET NUTRIMATE 3 FLOATING ASSEMBLY 502D800L/R, 502D800HL/HR & 470313 BELL CRANK KIT

NOTES: RH Frame with pivot arm mounts shown (RH leads, LH trails).  
LH opposite.

LH Standard with discs shown. RH opposite (not shown)  
Notched disc is always to the inside, closer to the row.



ITEM	PART #	DESCRIPTION	QTY
1a	5010568	Frame N/M 3 - DOS Floater Univ.	1
1b	5010567	Frame N/M 3 - DOS Floater CIH	1
2	210061	Bushing-Chrome 1.25 OD x .78 ID x 3.4	2
3	360031	Stop - Pivot Arm - N/m 3	2
4	475273	Pivot Arm Seal - Grease Fitting Assy	2
4a	211027	Seal - Rod Wiper	4
	475257G	Pivot Arm Assy = Items 2, 4 & 4a	2
5	4012835	Standard - Sloping Top	2
6	3012615	Scraper Kit (Includes 2 Roll Pins)	2
7	3012605A**	Disc-Bearing-Hub Assy 12"	2
	3012607	Repair Kit - 12" Disc, Bearing, Bolts, Cap	2
8	3012602A***	Disc-Bearing-Hub Assy 13.5" Notched	2
	3012608	Repair Kit - 13.5" Disc, Bearing, Bolts, Cap	2
9	460102	Nylon Delivery Tube Assy 3/8" x 16.25"	2
	3012616	Kit- Nylon Tube & Scraper	2
10	3012102	Dust Cap	4
11	2100021	Nut 5/8 Jam Right Hand	2
12	2100022	Nut 5/8 Jam Left Hand	2
13	2100011	Washer .639 x .998 x .030	8
14	201104	Nut 1/4 Hex Flange SS	2
15	200105	Carriage Bolt 1/4 x 3/4 SS	2
16	200334	HHCS 1/2 x 1 1/2 Gr 5	4
17	201119	Nut 1/2 Hex Flange	4
18	201116	Nut 1/2 Hex	4
19	200410	HHCS 3/4-16 x 5 Gr 5	2
20	202220	Washer 3/4 Flat SAE Hardened	2
21	201121	Nut 3/4-16 Hex	2
22	202116	Washer 1/2 Split Lock	4
23	360032	Plate - Support 3 x 3 x 1/4	2
24	200342	HHCS 1/2 x 3 1/4 Gr 5	6
25	201117	Nut 1/2 - Center Lock	8
26	4011735	Mount - Pivot Arm - N/M 3 - 2 hole	2
27	166017	Disc Blade - 12" Smooth	2
28	166019	Disc Blade - 13.5" Notched	2
29	3012500	Bearing - 204PY3	4
30	200115	HHCS 1/4 x 1 3/8 Gr 5	24
31	201101	Nut 1/4 Hex Center Lock	24
32	3012400	Hub	4

ITEM	PART #	DESCRIPTION	QTY
33	212607	Diaph. Ck Vlv Assy 3/8 x 3/8 - 5PSI	2
34	212209	Hose 3/8 x 6	2
35	220026	Clamp Hose 1/2	4
36	475258	Diaph. Ck Vlv - Hose - Clamps Assy	2
37	360034	Shim 1 x 3	2
42	200338	HHCS 1/2-13 x 3 Gr. 5	2
43	200324	HHCS 1/2-13 x 1 3/4 Gr. 5	4
44	200346	HHCS 1/2-20 X 3 1/2 Gr. 8	2
45	201130	Nut 1/2-20 Top Lock	2
46	202217	Washer 1/2 Flat SAE	2

### Bell Crank Kit

ITEM	PART #	DESCRIPTION	QTY
47	360065A	Bell Crank - CIH	1
48	203747	Pin Clevis 3/8 x 1 1/4	4
49	203760	Pin Clevis 7/16 x 2	1
50	203480	Pin Cotter 9/64 x 1	5
51	471054	Link Wldmnt	1

### Items Not Shown

475255L	Disc-Standard-Liq. Tube Assy-Left	1
475255R	Disc-Standard-Liq. Tube Assy-Right	1
475251LD	Disc-Standard-Dry Tube Assy. Left	1
475251RD	Disc-Standard-Dry Tube Assy-Right	1

\*\*Subassembly 3012605A Consists of: 3012500 bearing (JD #AA21480, Kinze #GA2014), 3012400 hub, 166017 blade.

\*\*\*Subassembly 3012602A consists of 3012500 bearing (JD #AA21480, Kinze #GA2014), 3012400 hub, 166019 blade - notched.

Repair Kit 3012607 includes: 166017 blade, 3012500 bearing, 3012102 dust cap, 200115 bolts (6), & 201101 nuts (6).

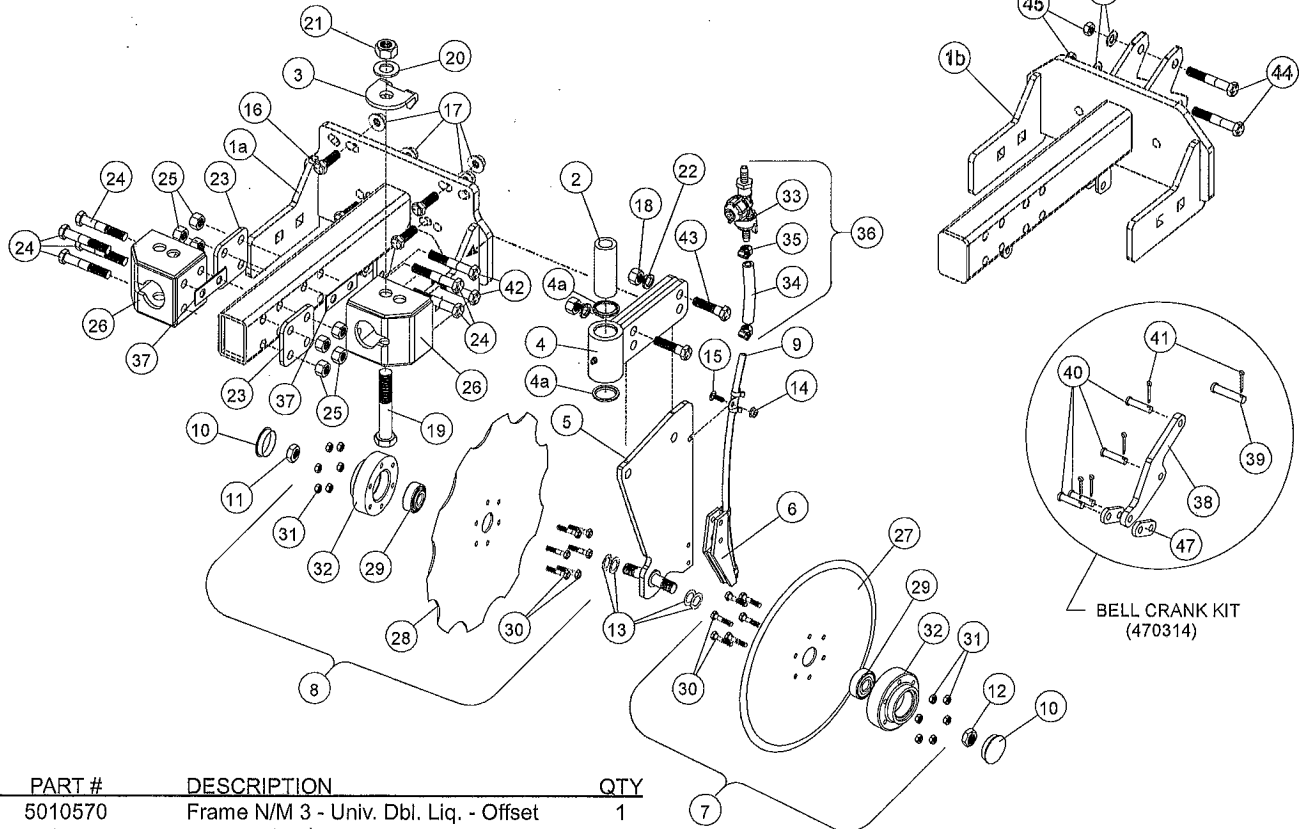
Repair Kit 3012608 includes: 166019 blade, 3012500 bearing, 3012102 dust cap, 200115 bolts (6), & 201101 nuts (6).

# DOUBLE OFFSET NUTRIMATE 3 ASSEMBLY

## 502D800L/R & 502D800HL/HR

NOTES: RH Frame with pivot arm mounts shown (RH leads, LH trails).  
LH opposite.

LH Standard with discs shown. RH opposite (not shown)  
Notched disc is always to the inside, closer to the row.



ITEM	PART #	DESCRIPTION	QTY
1a	5010570	Frame N/M 3 - Univ. Dbl. Liq. - Offset	1
1b	5010569	Frame N/M 3 - CIH Dbl. - Offset	1
2	210061	Bushing-Chrome 1.25 OD x .78 ID x 3.4	2
3	360031	Stop - Pivot Arm - N/m 3	2
4	475273	Pivot Arm Seal - Grease Fitting Assy	2
4a	211027	Seal - Rod Wiper	4
	475257G	Pivot Arm Assy = Items 2, 4 & 4a	2
5	4012835	Standard - Sloping Top	2
6	3012615	Scraper Kit (Includes 2 Roll Pins)	2
7	3012605A**	Disc-Bearing-Hub Assy 12"	2
	3012607	Repair Kit - 12" Disc, Bearing, Bolts, Cap	
8	3012602A***	Disc-Bearing-Hub Assy 13.5" Notched	2
	3012608	Repair Kit - 13.5" Disc, Bearing, Bolts, Cap	
9	460102	Nylon Delivery Tube Assy 3/8" x 16.25"	2
	3012616	Kit- Nylon Tube & Scraper	2
10	3012102	Dust Cap	4
11	2100021	Nut 5/8 Jam Right Hand	2
12	2100022	Nut 5/8 Jam Left Hand	2
13	2100011	Washer .639 x .998 x .030	8
14	201104	Nut 1/4 Hex Flange SS	2
15	200105	Carriage Bolt 1/4 x 3/4 SS	2
16	200334	HHCS 1/2 x 1 1/2 Gr 5	4
17	201119	Nut 1/2 Hex Flange	4
18	201116	Nut 1/2 Hex	4
19	200410	HHCS 3/4-16 x 5 Gr 5	2
20	202220	Washer 3/4 Flat SAE Hardened	2
21	201121	Nut 3/4-16 Hex	2
22	202116	Washer 1/2 Split Lock	4
23	360032	Plate - Support 3 x 3 x 1/4	2
24	200342	HHCS 1/2 x 3 1/4 Gr 5	6
25	201117	Nut 1/2 - Center Lock	8
26	4011735	Mount - Pivot Arm - N/M 3 - 2 hole	2
27	166017	Disc Blade - 12" Smooth	2
28	166019	Disc Blade - 13.5" Notched	2
29	3012500	Bearing - 204PY3	4

ITEM	PART #	DESCRIPTION	QTY
30	200115	HHCS 1/4 x 1 3/8 Gr 5	24
31	201101	Nut 1/4 Hex Center Lock	24
32	3012400	Hub	4
33	212607	Diaph. Ck Vlv Assy 3/8 x 3/8 - 5PSI	2
34	212209	Hose 3/8 x 6	2
35	220026	Clamp Hose 1/2	4
36	475258	Ball Ck Vlv - Hose - Clamps Assy	2
37	360034	Shim 1 x 3	2
38	360066	Bell Crank	1
39	203760	Pin Clevis 7/16 x 2	1
40	203747	Pin Clevis 3/8 x 1 1/4	4
41	203480	Pin Cotter 9/64 x 1	5
42	200338	HHCS 1/2-13 x 3 Gr. 5	2
43	200324	HHCS 1/2-13 x 1 3/4 Gr. 5	4
44	200346	HHCS 1/2-20 X 3 1/2 Gr. 8	2
45	201130	Nut 1/2-20 Top Lock	2
46	202217	Washer 1/2 Flat SAE	2
47	360074	Link Bell Crank/Arm	2

### Items Not Shown

475255L	Disc-Standard-Liq. Tube Assy-Left	1
475255R	Disc-Standard-Liq. Tube Assy-Right	1
475251LD	Disc-Standard-Dry Tube Assy. Left	1
475251RD	Disc-Standard-Dry Tube Assy-Right	1

\*\*Subassembly 3012605A Consists of: 3012500 bearing (JD #AA21480, Kinze #GA2014), 3012400 hub, 166017 blade.

\*\*\*Subassembly 3012602A consists of 3012500 bearing (JD #AA21480, Kinze #GA2014), 3012400 hub, 166019 blade - notched.

Repair Kit 3012607 includes: 166017 blade, 3012500 bearing, 3012102 dust cap, 200115 bolts (6), & 201101 nuts (6).

Repair Kit 3012608 includes: 166019 blade, 3012500 bearing, 3012102 dust cap, 200115 bolts (6), & 201101 nuts (6).