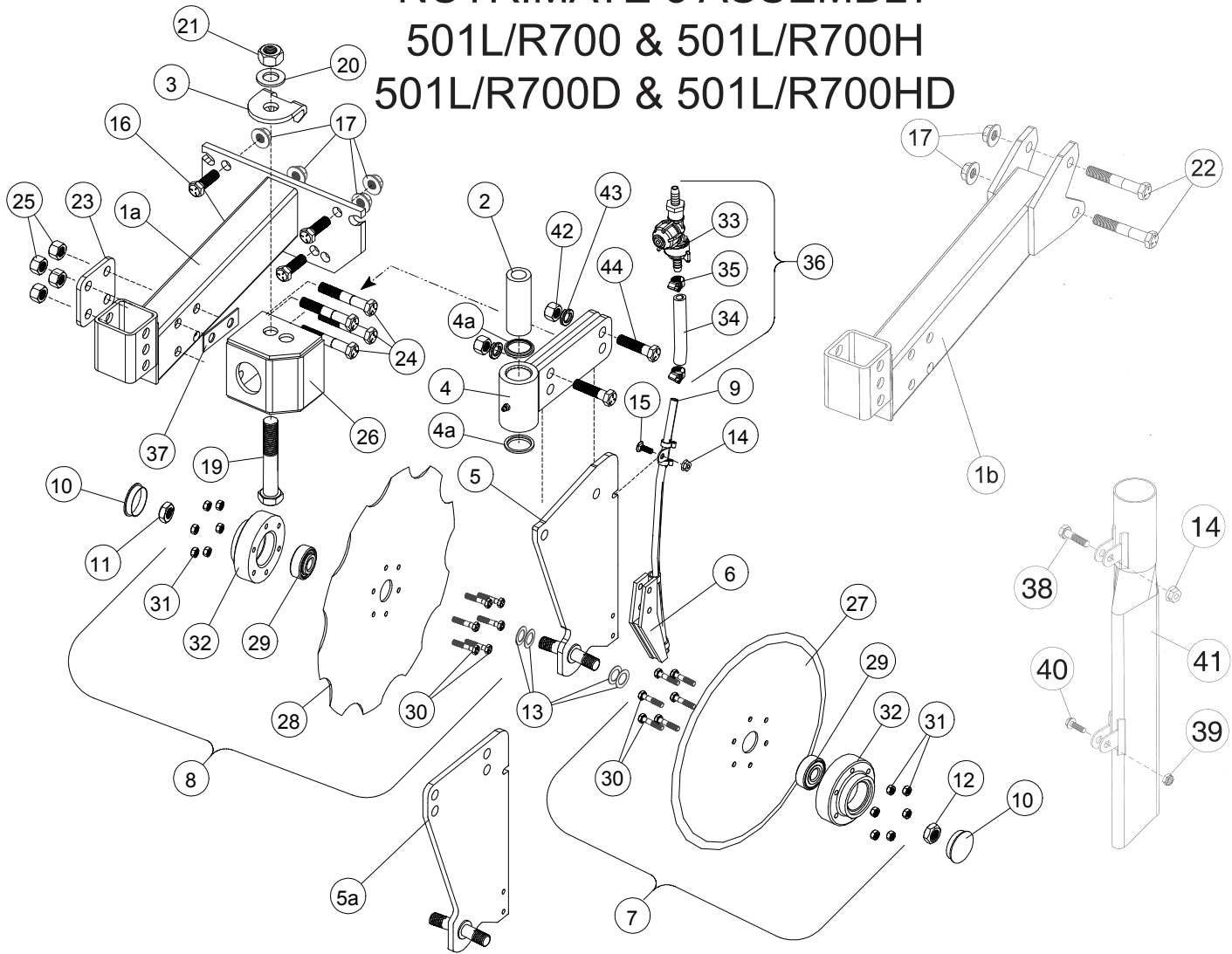


# NUTRIMATE 3 ASSEMBLY

## 501L/R700 & 501L/R700H

## 501L/R700D & 501L/R700HD



| ITEM | PART #      | DESCRIPTION                             | QTY |
|------|-------------|---|-----|
| 1a   | 5010554     | Frame N/M 3 - Universal w/Raised Tube   | 1   |
|      | 5010553D    | Frame N/M 3 Universal Dry w/Raised Tube | 1   |
| 1b   | 5010554H    | Frame N/M 3 - IH w/Raised Tube          | 1   |
| 2    | 210061      | Bushing-Chrome 1.25 OD x .78 ID x 3.4   | 1   |
| 3    | 360031      | Stop - Pivot Arm - N/m 3                | 1   |
| 4    | 475273      | Pivot Arm with Seals & Grease Fitting   | 1   |
| 4a   | 211027      | Seal - Rod Wiper                        | 2   |
|      | 475257G     | Pivot Arm Assy = Items 2, 4 & 4a        | 1   |
| 5    | 4012835     | Standard - 2 Hole                       | 1   |
| 5a   | 4012833     | Standard                                | 1   |
| 6    | 3012615     | Scraper Kit (Includes 2 Roll Pins)      | 1   |
| 7    | 3012605A**  | Disc-Bearing-Hub Assy 12"               | 1   |
|      | 3012607     | Repair Kit - Items 27, 29, 10, 30, 31   | 1   |
| 8    | 3012602A*** | Disc-Bearing-Hub Assy 13.5" Notched     | 1   |
|      | 3012608     | Repair Kit - Items 28, 29, 10, 30, 31   | 1   |
| 9    | 460102      | Nylon Delivery Tube Assy 3/8" x 16.25"  | 1   |
|      | 3012616     | Kit- Nylon Tube & Scraper               | 1   |
| 10   | 3012102     | Dust Cap                                | 2   |
| 11   | 2100021     | Nut 5/8 Jam Right Hand                  | 1   |
| 12   | 2100022     | Nut 5/8 Jam Left Hand                   | 1   |
| 13   | 2100011     | Washer .639 x .998 x .030               | 4   |
| 14   | 201104      | Nut 1/4 Hex Flange SS                   | 1   |
| 15   | 200105      | Carriage Bolt 1/4 x 3/4 SS              | 1   |
| 16   | 200334      | HHCS 1/2 x 1 1/2 Gr 5                   | 4   |
| 17   | 201119      | Nut 1/2 Hex Flange                      | 4   |
| 19   | 200410      | HHCS 3/4-16 x 5 Gr 5                    | 1   |
| 20   | 202220      | Washer 3/4 Flat SAE Hardened            | 1   |
| 21   | 201121      | Nut 3/4-16 Hex                          | 1   |
| 22   | 200340      | HHCS 1/2 x 3 1/2 Gr 5                   | 2   |
| 23   | 360032      | Plate - Support 3 x 3 x 1/4             | 1   |
| 24   | 200342      | HHCS 1/2 x 3 1/4 Gr 5                   | 4   |
| 25   | 201117      | Nut 1/2 - Center Lock                   | 4   |

| ITEM                   | PART #    | DESCRIPTION                         | QTY |
|------------------------|-----------|-------------------------------------|-----|
| 26                     | 4011735   | Mount - Pivot Arm - N/M 3 - 2 hole  | 1   |
| 27                     | 166017    | Disc Blade - 12" Smooth             | 1   |
| 28                     | 166019    | Disc Blade - 13.5" Notched          | 1   |
| 29                     | 3012500   | Bearing - 204PY3                    | 2   |
| 30                     | 200115    | HHCS 1/4 x 1 3/8 Gr 5               | 12  |
| 31                     | 201101    | Nut 1/4 Hex Center Lock             | 12  |
| 32                     | 3012400   | Hub                                 | 2   |
| 33                     | 212606    | Diaph. Ck Vlv Assy 3/8 x 3/8 - 4PSI | 1   |
|                        | or 212607 | Diaph. Ck Vlv Assy 3/8 x 3/8 - 5PSI | 1   |
| 34                     | 212209    | Hose 3/8 x 6                        | 1   |
| 35                     | 220026    | Clamp Hose 1/2                      | 2   |
| 36                     | 475258    | Ball Ck Vlv - Hose - Clamps Assy    | 1   |
| 37                     | 360034    | Shim 1 x 3                          | 1   |
| 38                     | 200106    | HHCS 1/4 x 1                        | 1   |
| 39                     | 201091    | Nut #10-24 Nylock                   | 1   |
| 40                     | 204012    | Screw #10-24 x 5/8                  | 1   |
| 41                     | 4010153   | Fertilizer Tube - Dry               | 1   |
| 42                     | 201116    | Nut 1/2-13 Hex                      | 2   |
| 43                     | 202116    | Washer 1/2 Split Lock               | 2   |
| 44                     | 200324    | HHCS 1/2-13 x 1 3/4 Gr. 5           | 2   |
| <u>Items Not Shown</u> |           |                                     |     |
|                        | 475255L   | Disc-Standard-Liq. Tube Assy-Left   | 1   |
|                        | 475255R   | Disc-Standard-Liq. Tube Assy-Right  | 1   |
|                        | 475251LD  | Disc-Standard-Dry Tube Assy. Left   | 1   |
|                        | 475251RD  | Disc-Standard-Dry Tube Assy-Right   | 1   |

\*\*Subassembly 3012605A Consists of: 3012500 bearing (JD #AA21480, Kinze #GA2014), 3012400 hub, 166017 blade.

\*\*\*Subassembly 3012602A consists of 3012500 bearing (JD #AA21480, Kinze #GA2014), 3012400 hub, 166019 blade - notched.