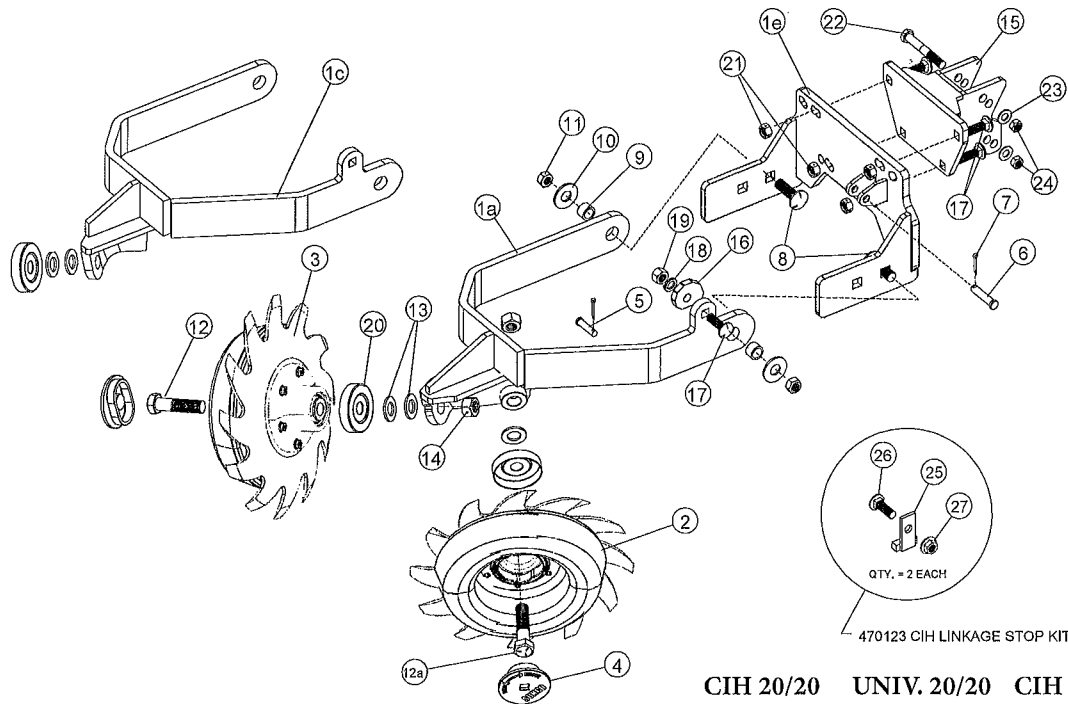


**5011277L/R & 5011278L/R & 5011285L/R & 5011286L/R
KIT III - FLOATING SABER TOOTH**



| | CIH 20/20 | UNIV. 20/20 | CIH 1 DISC | UNIV. 1 DISC |
|--|------------|-------------|------------|--------------|
| | 5011277L/R | 5011278L/R | 5011285L/R | 5011286L/R |
| | QTY | QTY | QTY | QTY |

| ITEM | PART # | DESCRIPTION | QTY | QTY | QTY | QTY |
|------|----------|---|-----|-----|-----|-----|
| 1a | 471028AR | Arm II - Floating S/T - 20/20 RH | 1 | 1 | 0 | 0 |
| 1b | 471028AL | Arm II - Floating S/T - 20/20 LH (not shown) | 1 | 1 | 0 | 0 |
| 1c | 471027R | Arm II - Floating S/T - N/M RH 1 disc | 0 | 0 | 1 | 1 |
| 1d | 471027L | Arm II - Floating S/T - N/M LH 1 disc (not shown) | 0 | 0 | 1 | 1 |
| 1e | 471049R | Mount S/T - C/F - Univ. RH | 1 | 1 | 1 | 1 |
| 1f | 471049L | Mount S/T - C/F - Univ. LH (not shown) | 1 | 1 | 1 | 1 |
| 2 | 3012618L | Disc-Hub-Brg-Depth Band Assy LH | 1 | 1 | 1 | 1 |
| 3 | 3012618R | Disc-Hub-Brg-Depth Band Assy RH | 1 | 1 | 1 | 1 |
| 4 | 370132 | Cap Depth Band | 2 | 2 | 1 | 1 |
| 5 | 203747 | Pin Clevis 3/8 x 1 1/4 Pltd | 1 | 1 | 1 | 1 |
| 6 | 203760 | Pin Clevis 7/16 x 2 Pltd | 1 | 1 | 1 | 1 |
| 7 | 203480 | Pin Cotter 9/64 x 1 | 2 | 2 | 2 | 2 |
| 8 | 200456 | Carriage Bolt 5/8-11 x 2 Gr. 5 | 2 | 2 | 2 | 2 |
| 9 | 380110 | Bushing .875 x .650 x .563 | 2 | 2 | 2 | 2 |
| 10 | 202218 | Washer 5/8 Flat | 2 | 2 | 2 | 2 |
| 11 | 201142 | Nut 5/8-11 Top Lock | 2 | 2 | 2 | 2 |
| 12 | 200406 | HHCS 3/4-10 x 3 1/2 Gr. 5 | 1 | 1 | 1 | 1 |
| 12a | 200407 | HHCS 3/4-10 x 4 Gr. 5 | 1 | 1 | 0 | 0 |
| 13 | 202220 | Washer 3/4 Flat SAE | 3 | 3 | 2 | 2 |
| 14 | 201152 | Nut 3/4-10 Hex Center Lock | 2 | 2 | 1 | 1 |
| 15 | 471051 | Mount Adapter CIH to Univ. | 1 | 0 | 1 | 0 |
| 16 | 360064 | Cam - 9 lobe | 1 | 1 | 1 | 1 |
| 17 | 200321 | Carriage Bolt 1/2-13 x 1 1/2 Gr. 5 | 5 | 1 | 5 | 1 |
| 18 | 202116 | Washer 1/2 Split Lock | 1 | 1 | 1 | 1 |
| 19 | 201116 | Nut Hex 1/2-13 | 1 | 1 | 1 | 1 |
| 20 | 360062 | Bearing Shield 2.91 x .76 | 2 | 2 | 1 | 1 |
| 21 | 201117 | Nut 1/2-13 Center Lock | 4 | 0 | 4 | 0 |
| 22 | 200346 | HHCS 1/2-20 x 3 1/2 Gr. 8 | 2 | 0 | 2 | 0 |
| 23 | 202217 | Washer 1/2 SAE Hardened | 2 | 0 | 2 | 0 |
| 24 | 201130 | Nut 1/2-20 Top Lock | 2 | 0 | 2 | 0 |
| 25 | 470101H | Linkage Stop 7/16 | 2 | 0 | 2 | 0 |
| 26 | 200332 | Carriage Bolt 1/2-13 x 1 1/4 Gr. 5 | 2 | 0 | 2 | 0 |
| 27 | 201119 | Nut 1/2-13 Hex Flange | 2 | 4 | 2 | 4 |
| | 200334 | HHCS 1/2-13 x 1 1/2 (Univ. Mnt. - not shown) | 0 | 4 | 0 | 4 |
| | 470410 | Kit Adapter - CIH to Univ. (Items 15, 21-27) | 1 | 0 | 1 | 0 |